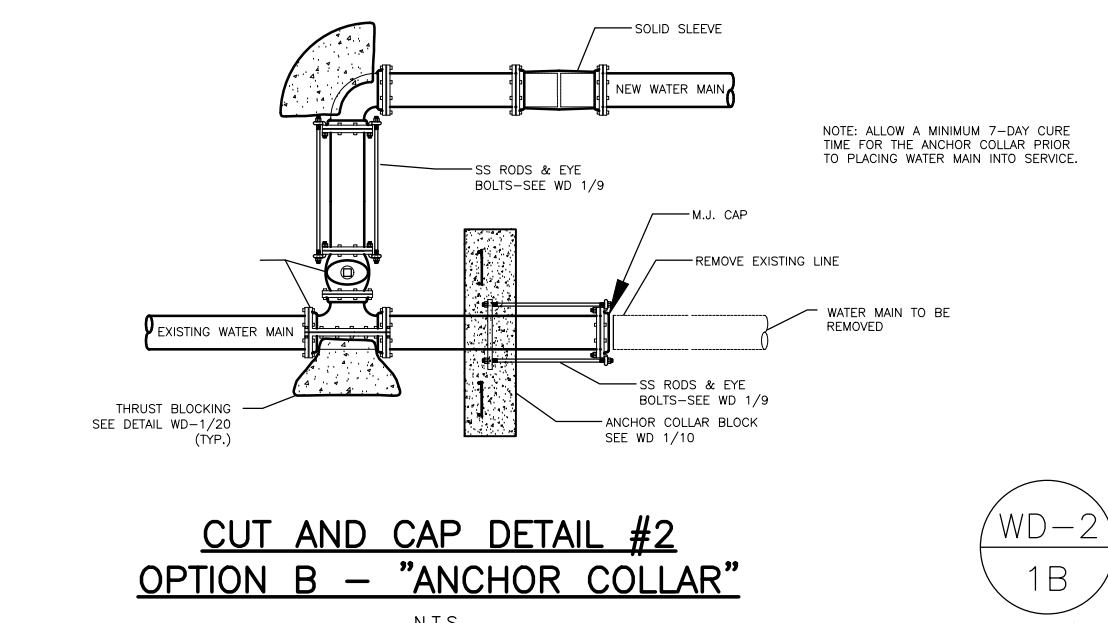


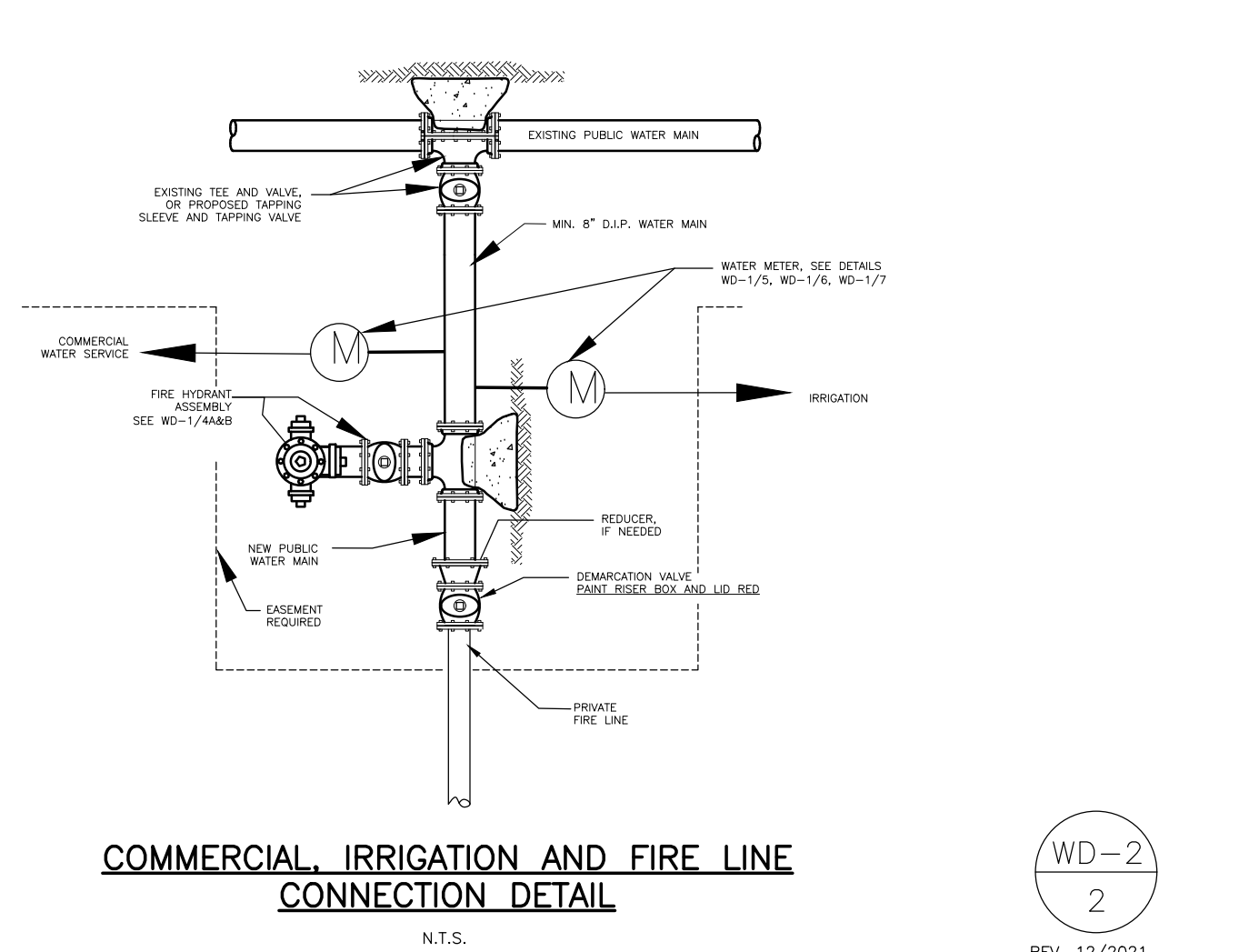
**CUT AND CAP DETAIL
OPTION A - "HOT-BLOCK"**
N.T.S.

WD-2
1A
REV. 12/2021



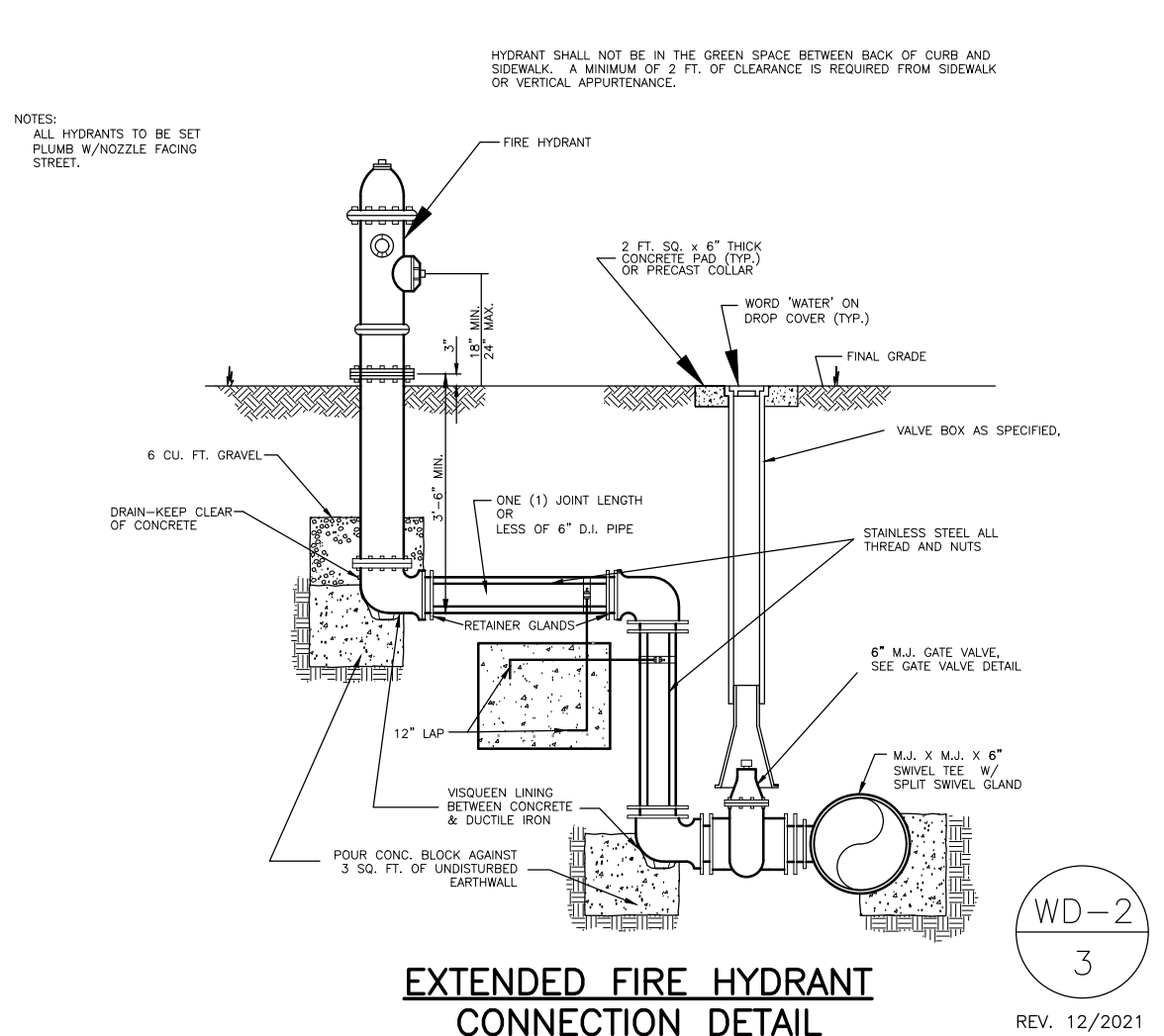
**CUT AND CAP DETAIL #2
OPTION B - "ANCHOR COLLAR"**
N.T.S.

WD-2
1B
REV. 01/2022



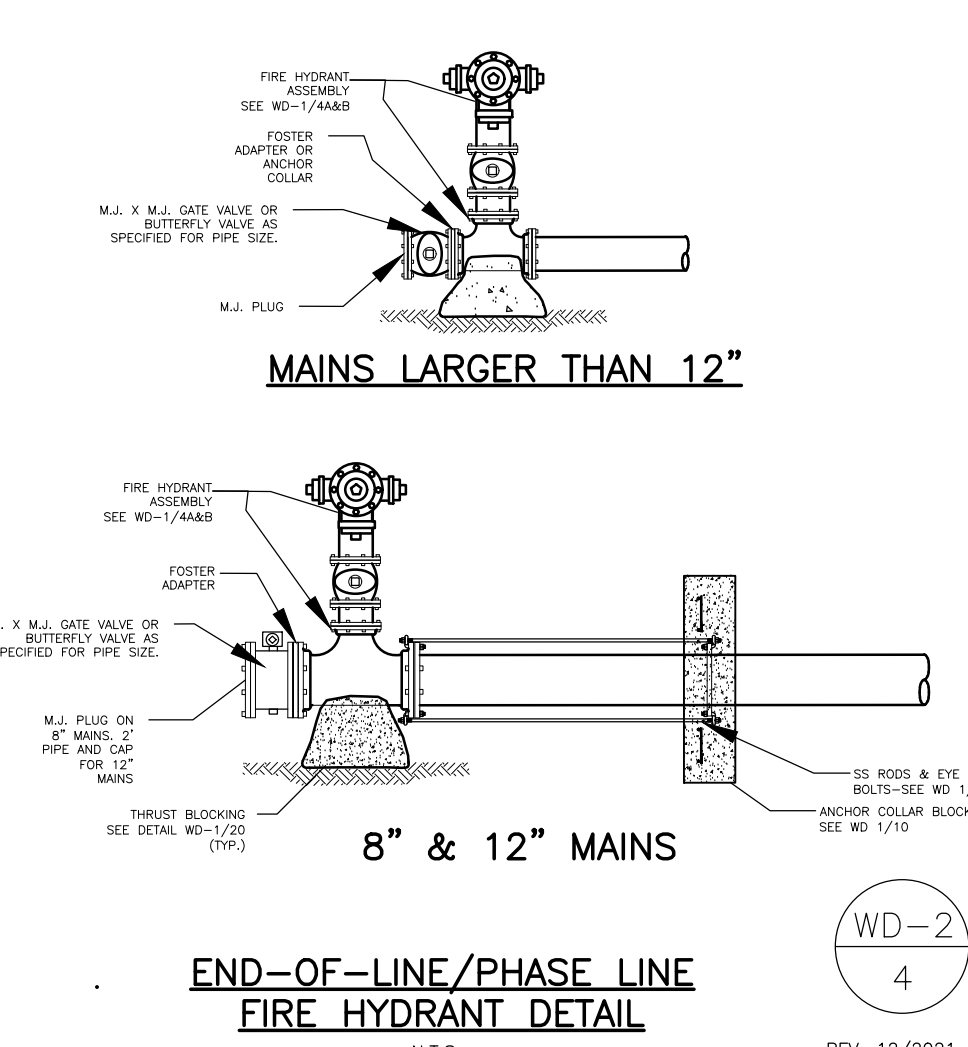
**COMMERCIAL IRRIGATION AND FIRE LINE
CONNECTION DETAIL**
N.T.S.

WD-2
2
REV. 12/2021



**EXTENDED FIRE HYDRANT
CONNECTION DETAIL**
N.T.S.

WD-2
3
REV. 12/2021



MAINS LARGER THAN 12"

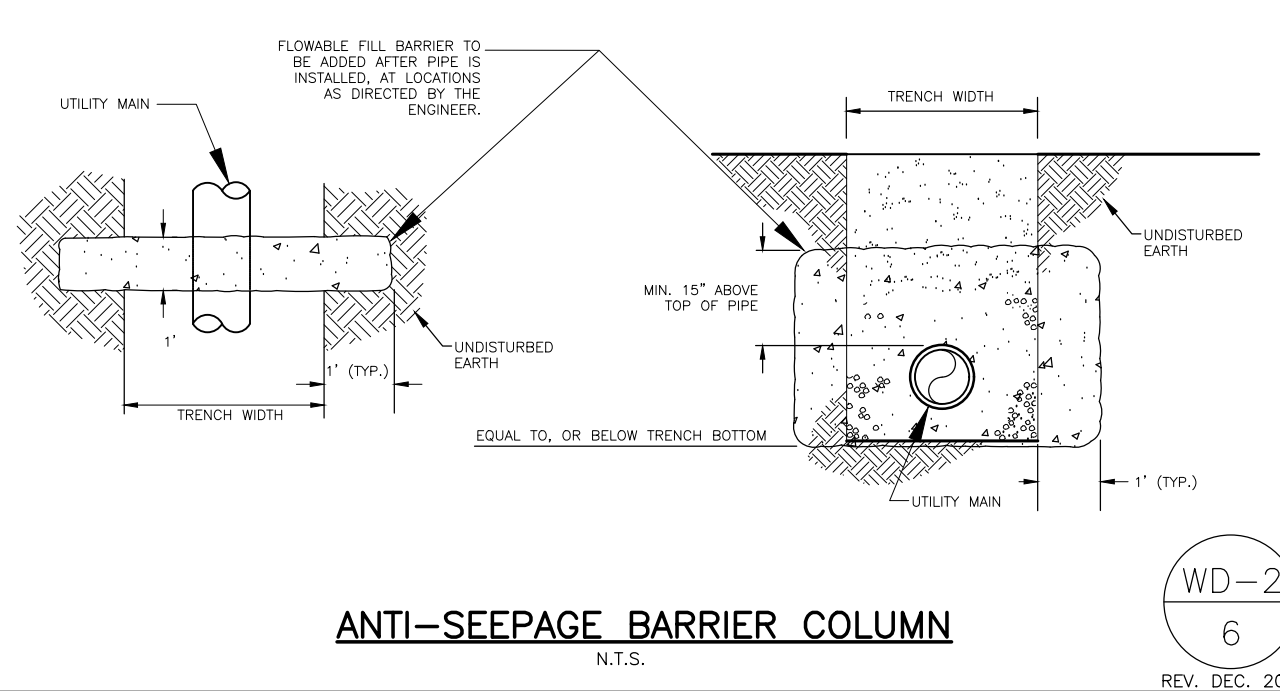
8" & 12" MAINS

**END-OF-LINE/PHASE LINE
FIRE HYDRANT DETAIL**
N.T.S.

WD-2
4
REV. 12/2021

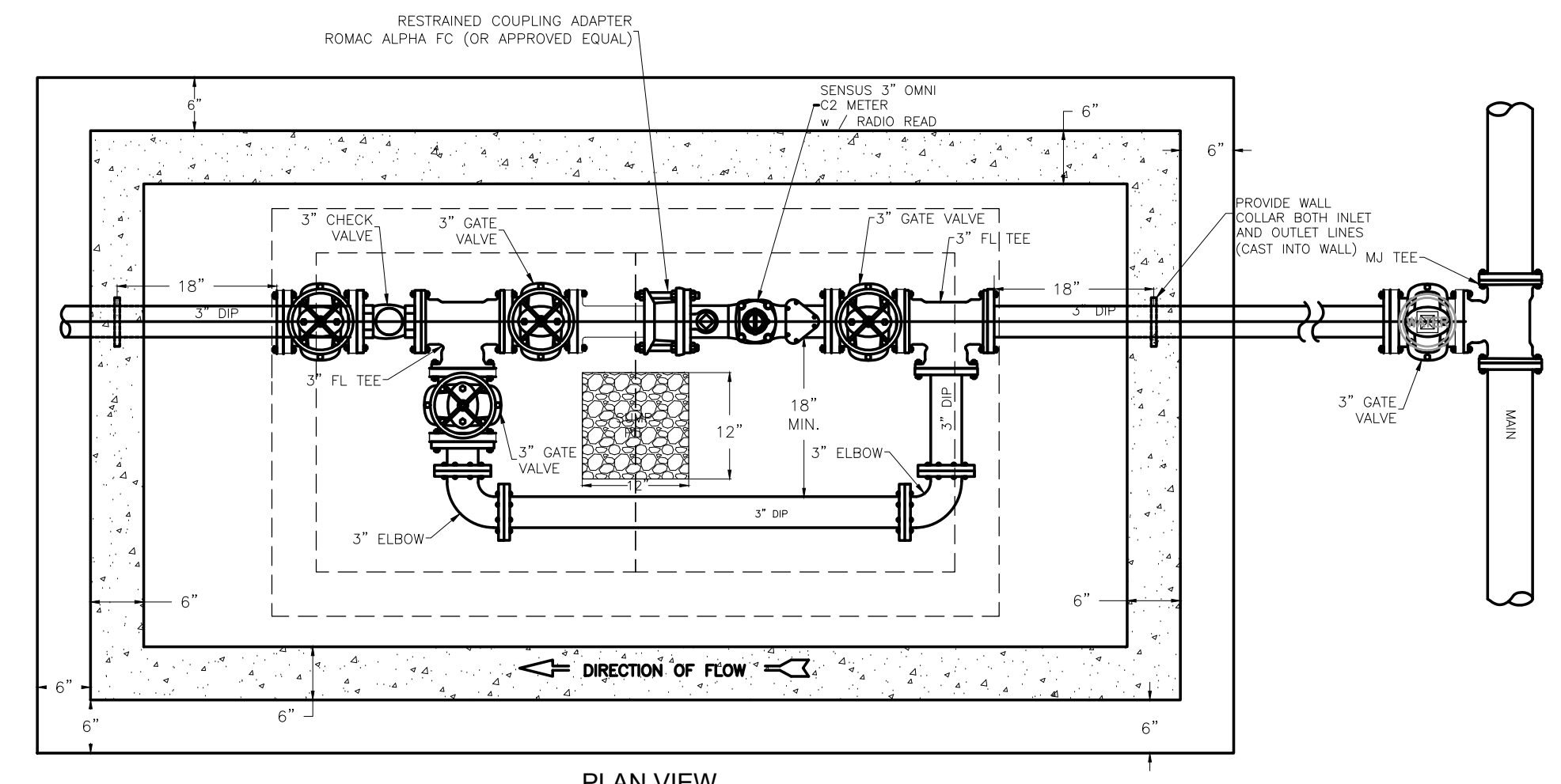
RESERVED

WD-2
5

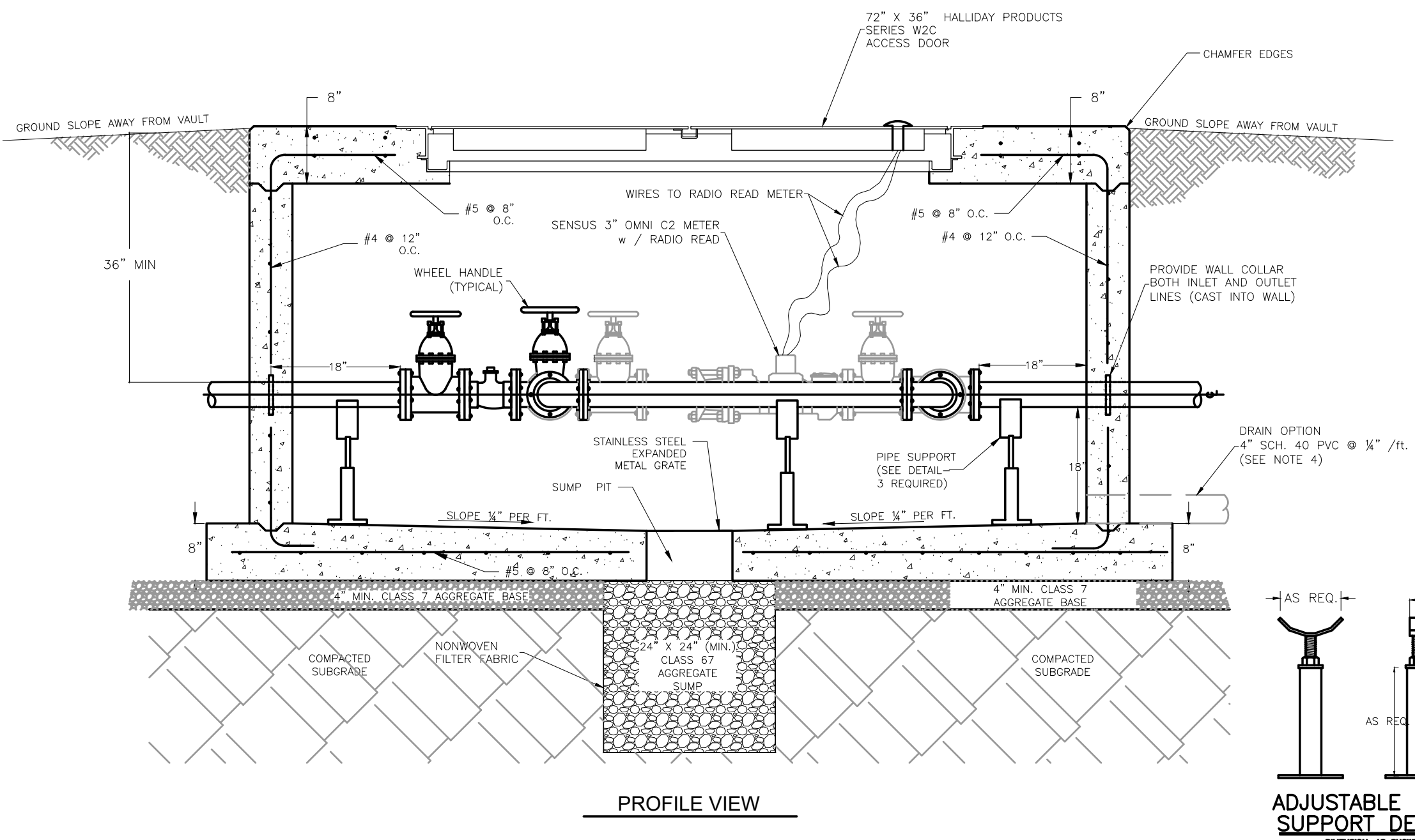


ANTI-SEEPAGE BARRIER COLUMN
N.T.S.

WD-2
6
REV. DEC. 2006



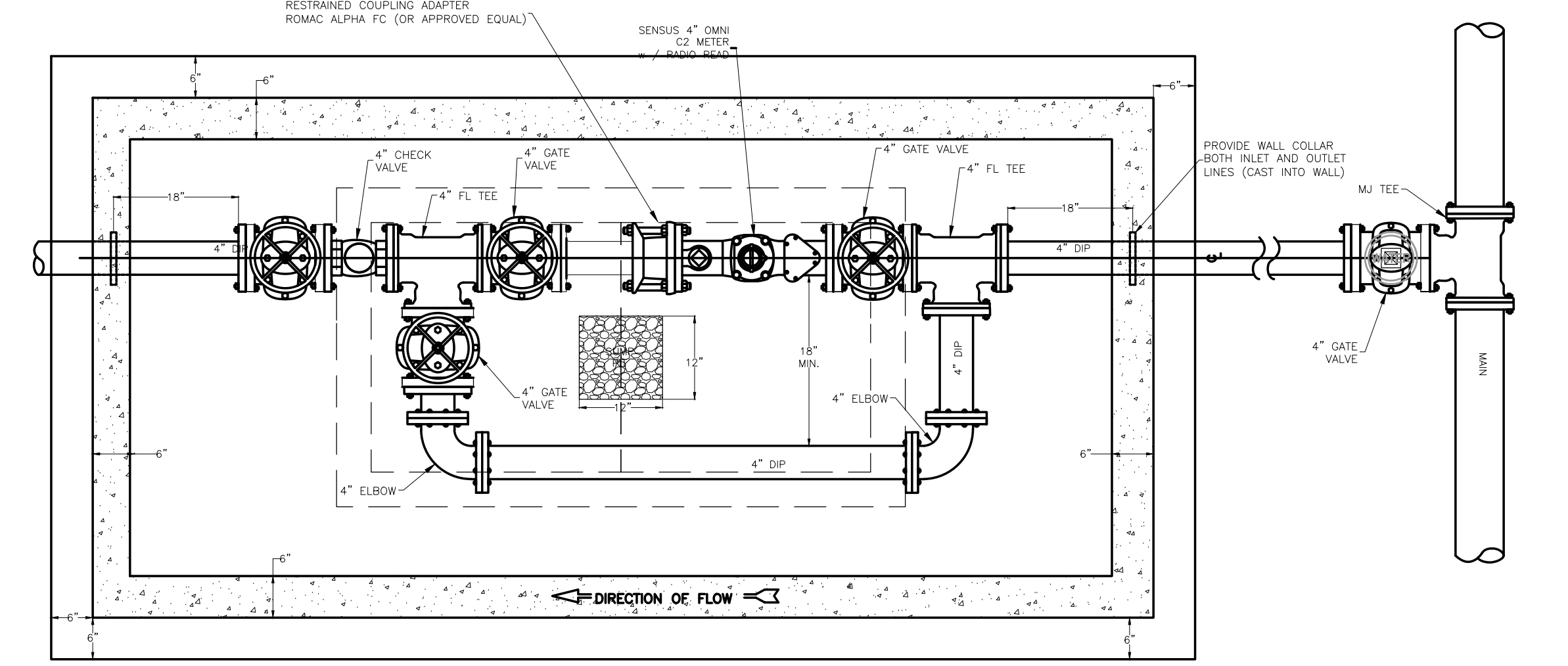
PLAN VIEW



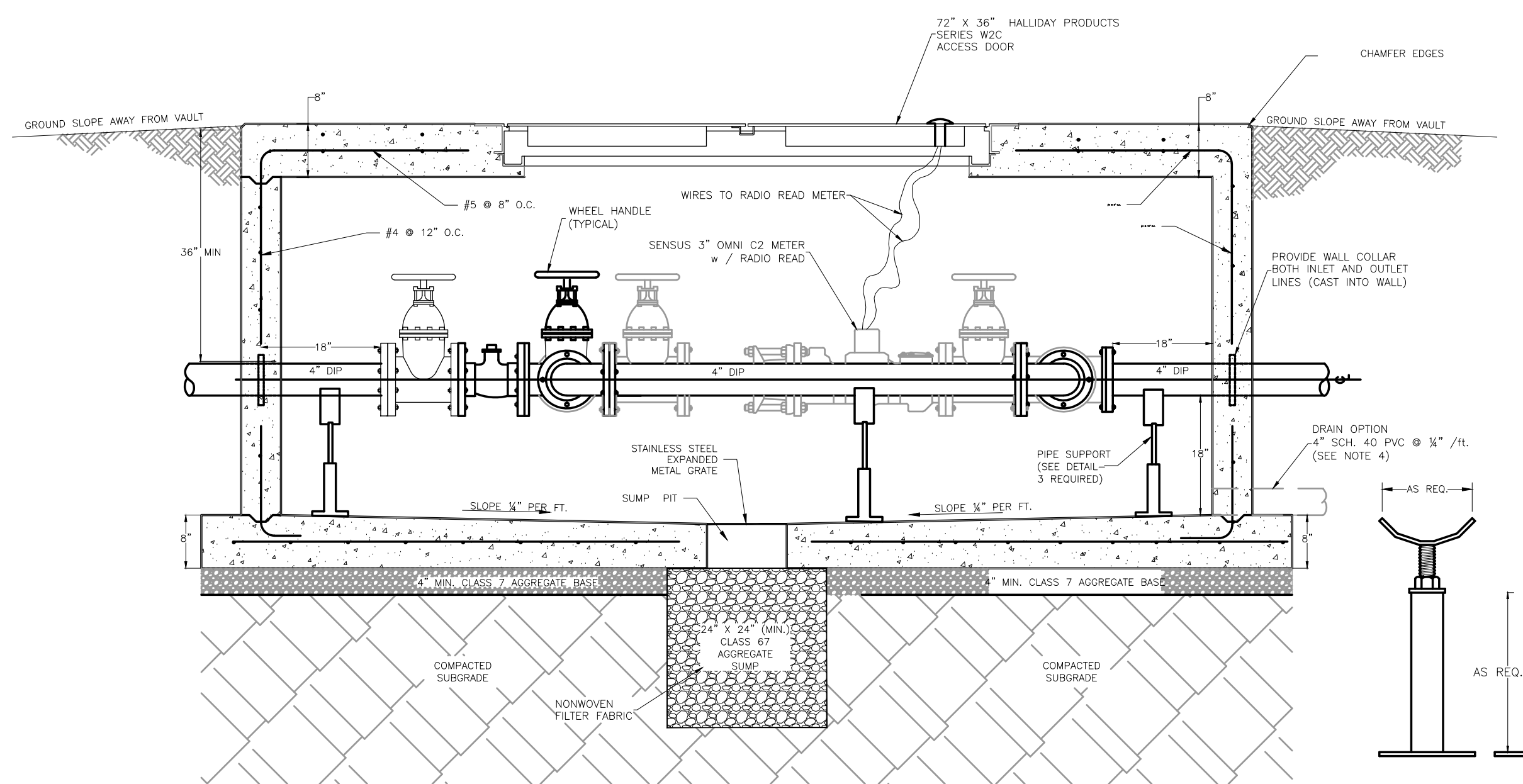
PROFILE VIEW

**3-INCH METER VAULT
NTS**

WD-2
9
REV. 09/2022



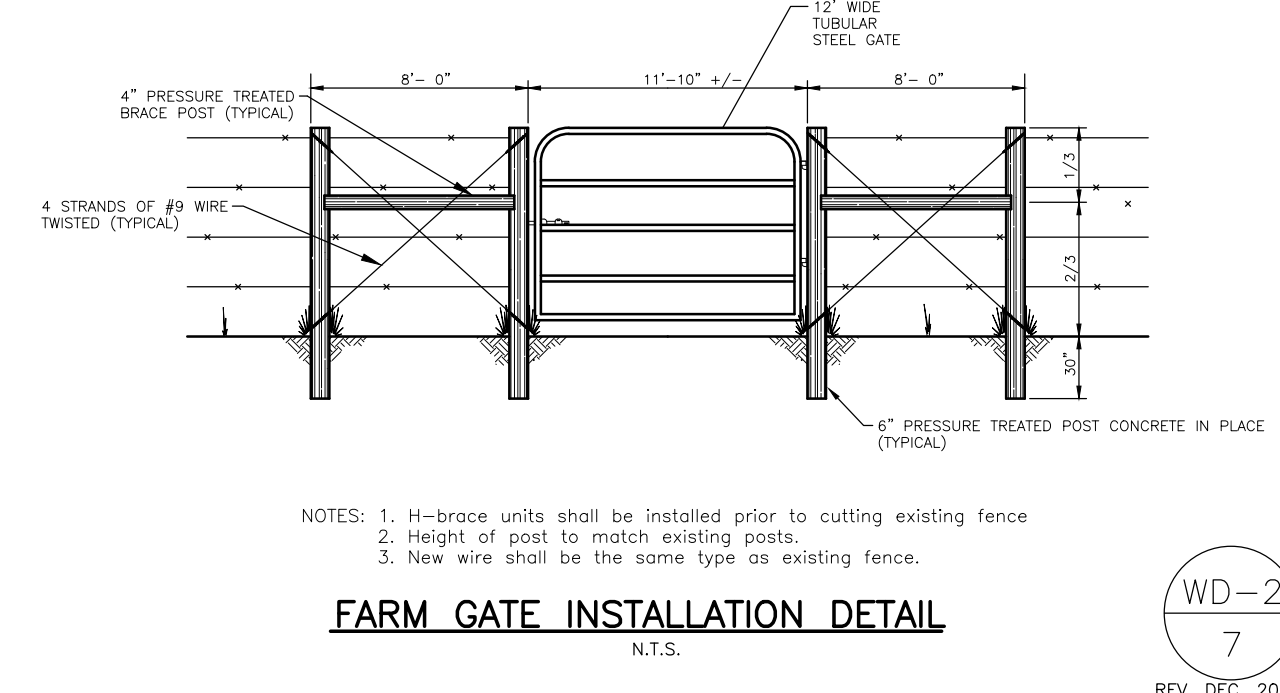
PLAN VIEW



PROFILE VIEW

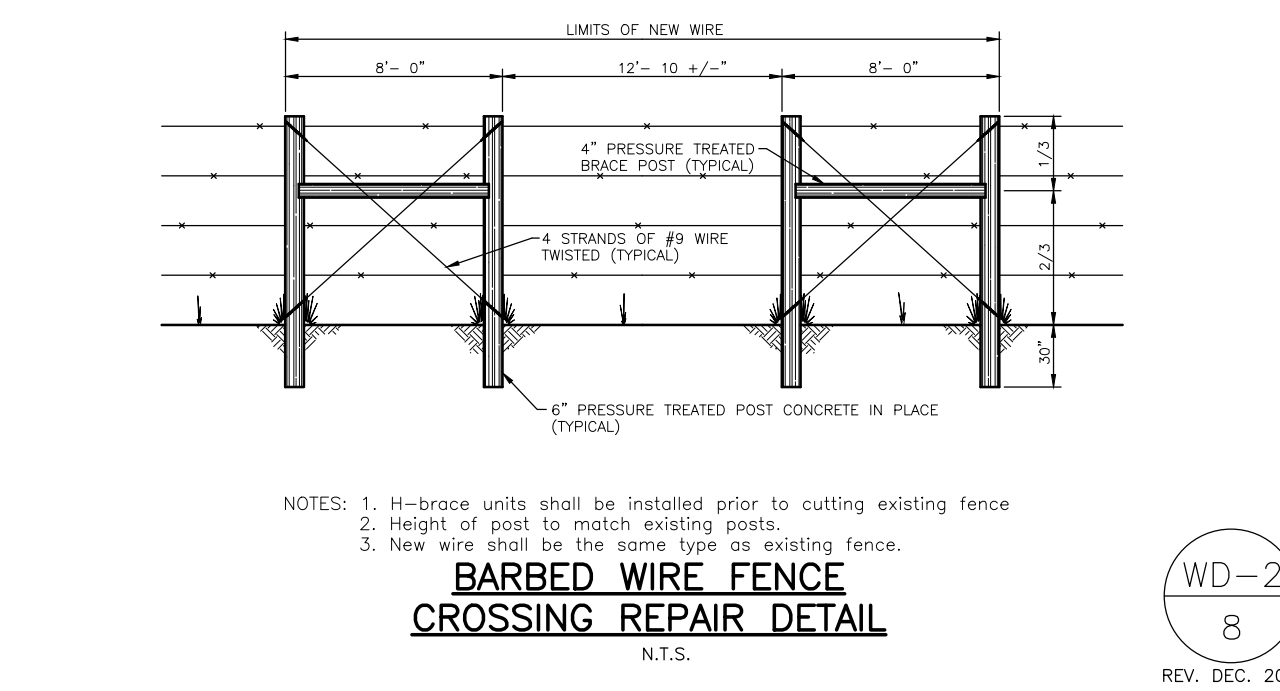
**4-INCH METER VAULT
NTS**

- NOTES:
- METERS WILL BE INCLUDED WITH THE INSTALLATION TO ENSURE PROPER FIT.
 - ALL BOLTS TO BE STAINLESS STEEL.
 - SLOPE FLOOR TO DRAIN.
 - IF POSSIBLE, PROVIDE 4" PVC DRAIN TO DAYLIGHT OR STORM SEWER. PROVIDE PVC CHECK IN DRAIN PIPE. THE AGGREGATE SUMP IS NOT REQUIRED IN THIS CASE.
 - CONCRETE SHALL HAVE A MINIMUM COMPRESSIVE STRENGTH OF 4000 PSI.
 - CONTRACTOR SHALL VERIFY ALL PART DIMENSIONS.
 - ALL MATERIAL AND LABOR FOR 4" METER VAULT (INCLUDING METER) SHALL BE PROVIDED BY THE CONTRACTOR.



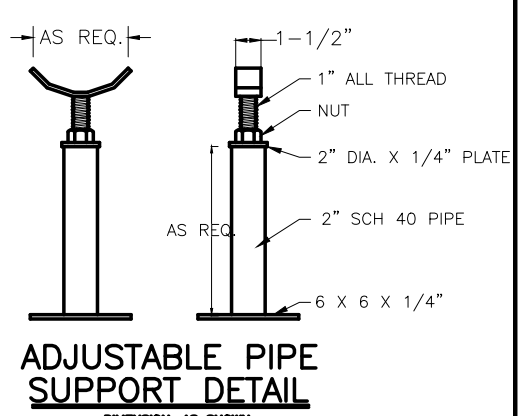
FARM GATE INSTALLATION DETAIL
N.T.S.

WD-2
7
REV. DEC. 2006

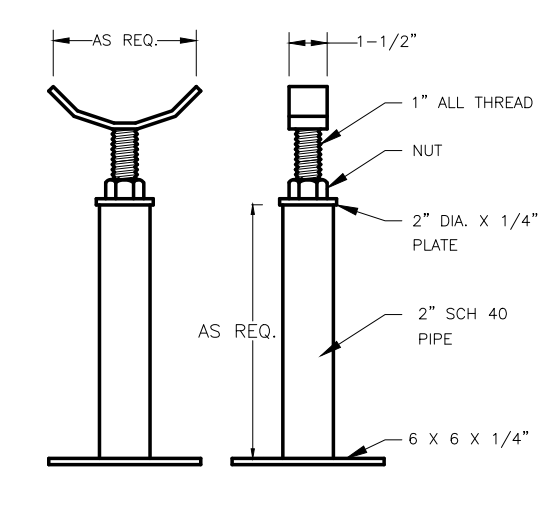


**BARBED WIRE FENCE
CROSSING REPAIR DETAIL**
N.T.S.

WD-2
8
REV. DEC. 2006



**ADJUSTABLE PIPE
SUPPORT DETAIL**
DIMENSION AS SHOWN



**ADJUSTABLE PIPE
SUPPORT DETAIL**
DIMENSION AS SHOWN

WATER DETAILS



P.O. DRAWER 338
601 SOUTH 2ND ROGERS, ARKANSAS
72757-0338

REVISION DATE: 9/20/2022
SHEET NO.: WD-2

WD-2
10
REV. 09/2022